

# cuisi / 2

SOLUTION



simple • fast • economical

**EBSU**  
ÉBÉNISTERIE ST-URBAIN LTÉE

# T

he Cuisi 12 Solution is a series of twelve different modules for the kitchen, it is available in three of the most popular high quality melamine finishes.

Easy and fast to assemble, these sturdy modules will allow you to

built in no time a kitchen or any other design storage space in your home, in no time at all.

The quality hardware which is used includes metallic European hinges/side drawers and a concealed CAMlock assembly system.

# Simp



## FOR A COMPLETE KITCHEN

It is now possible to design and to create a beautiful and practical kitchen for your house, cottage or apartment, afterwards you can decorate your area as you wish.

The suggested model shown includes the following modules:

- 1 SCBTP12-ER
- 2 SCBTP15-ER
- 1 SCB24-ER
- 1 SCB30-ER
- 1 SCBC36-ER
- 3 SCHG12-ER (2 for the islet)
- 3 SCHG15-ER (2 for the islet)
- 2 SCHTP30-ER
- 1 SCHMO24-ER
- 1 SCHC36-ER
- 1 SCGM15-ER
- 4 SCF30-ER (2 for the islet)



WHITE  
WOOD GRAIN  
(WG)

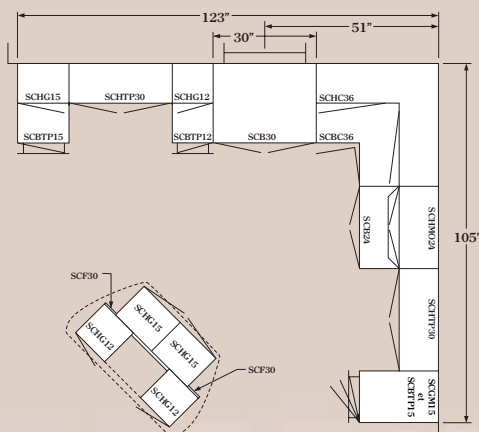


MAPLE  
(ER)



CHERRY  
(CE)

# econo



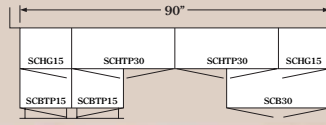
le

### FOR A PRACTICAL WORKING AREA

The Cuisi 12 Solution modules are also practical for additional storage space in the basement, your working area or even in your laundry room.

The suggested concept includes the following modules:

- 2 SCBTP15-WG
- 1 SCB30-WG
- 2 SCHG15-WG
- 2 SCHTP30-WG

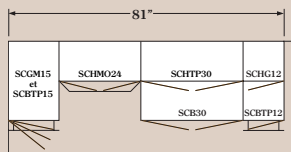


### FOR LIMITED SPACE AREAS

For a smaller kitchen use in a bachelor apartment, loft, hotel or even at work for the employee's kitchen.

The suggested design includes the following modules:

- 1 SCBTP12-CE
- 1 SCBTP15-CE
- 1 SCB30-CE
- 1 SCHG12-CE
- 1 SCHTP30-CE
- 1 SCHMO24-CE
- 1 SCGM15-CE
- 1 SCF30-CE



fast



omical

**EACH PACKAGE INCLUDE**  
**door, hinges, handle**  
**and kick step.**

*All modules include the necessary assembly hardware, one decorative metallic handle for each door and or each drawer front and kick step for the base module*

*We suggest the Cuisi 12 Solution because it is most affordable, and because you don't have to be a kitchen specialist to design and install your new ready to assemble kitchen. Draw up your plans and we will deliver your new kitchen to your favourite retailer in a short lapse of time.*

# cuisi 12

## SOLUTION



**24" BASE CABINET**  
 With two 5/8" assorted melamine doors.  
 24 in (width) x 34 1/2 in (height) x 24 in (depth)

SCB24-CE  
 SCB24-ER  
 SCB24-WG



**30" BASE CABINET**  
 With two 5/8" assorted melamine doors.  
 30 in (width) x 34 1/2 in (height) x 24 in (depth)

SCBTP30-CE  
 SCBTP30-ER  
 SCBTP30-WG



**12" BASE CABINET**  
 With one 5/8" assorted melamine door and one drawer.  
 12 in (width) x 34 1/2 in (height) x 24 in (depth)

SCBTP12-CE  
 SCBTP12-ER  
 SCBTP12-WG



**15" BASE CABINET**  
 With one 5/8" assorted melamine door and one drawer.  
 15 in (width) x 34 1/2 in (height) x 24 in (depth)

SCBTP15-CE  
 SCBTP15-ER  
 SCBTP15-WG



**15" TOP PANTRY**  
 With two 5/8" assorted melamine doors. Need a 15" base cabinet.  
 15 in (width) x 48 1/4 in (height) x 24 in (depth)

SCGM15-CE  
 SCGM15-ER  
 SCGM15-WG



**36" CORNER BASE CABINET**  
 With two 5/8" assorted melamine doors.  
 36 in (width) x 34 1/2 in (height) x 36 in (depth)

SCBC36-CE  
 SCBC36-ER  
 SCBC36-WG



**12" TOP CABINET**  
 With one 5/8" assorted melamine door.  
 12 in (width) x 30 in (height) x 12 1/2 in (depth)

SCHG12-CE  
 SCHG12-ER  
 SCHG12-WG



**15" TOP CABINET**  
 With one 5/8" assorted melamine door.  
 15 in (width) x 30 in (height) x 12 1/2 in (depth)

SCHG15-CE  
 SCHG15-ER  
 SCHG15-WG



**30" TOP CABINET**  
 With two 5/8" assorted melamine doors.  
 30 in (width) x 15 in (height) x 12 1/2 in (depth)

SCHTP30-CE  
 SCHTP30-ER  
 SCHTP30-WG



**36" CORNER TOP CABINET**  
 With two 5/8" assorted melamine doors.  
 36 in (width) x 30 in (height) x 36 in (depth)

SCHC36-CE  
 SCHC36-ER  
 SCHC36-WG



**24" MICROWAVE TOP CABINET**  
 With two 5/8" assorted melamine doors.  
 24 in (width) x 30 in (height) x 12 1/2 in (depth)

SCHM024-CE  
 SCHM024-ER  
 SCHM024-WG



**FILLER KIT**  
 With kick step block and preglued edge band.  
 Assorted melamine 5/8 in (width) x 30 in (height) x 4 1/2 in (depth)

SCF30-CE  
 SCF30-ER  
 SCF30-WG



info@ebsu.ca

### PLANT

109, montée Rivière des Fèves, C.P. 220  
 St-Urbain-Premier (Québec) J0S 1Y0  
 Tel: (450) 427-2687  
 Fax: (450) 427-7150  
 1-877-533-7729

### WAREHOUSE

226, rue Principale  
 St-Louis-de-Gonzague (Québec) J0S 1T0  
 Tel: (450) 373-4861  
 Fax: (450) 373-7166